

SOLAR·SKIN

THERMAL UNDERLAYMENT



SAVING ENERGY ONE ROOF AT A TIME

SOL-R-SKIN CLASS A

SOL-R-SKIN Class A is a patented roofing underlayment which combines the unique characteristics of a roofing underlayment with those of a fire barrier and a thermal insulation. SOL-R-SKIN Class A has been testing and passed the ASTM E108 burning brand test. The result is by using SOL-R-SKIN Class A metal roofing manufactures comply with and meet the urban wild fire requirements that more and more states are implementing.

SOL-R-SKIN Class A benefits don't stop there though. SOL-R-SKIN Class A also provides thermal protection which turns non-compliant roofs into roofs that meet CRRC cool roofs requirements.

As you can see SOL-R-SKIN offers benefits that no other product on the market today offers.

FEATURES AND BENEFITS

Passed ASTM 108 Burning Brand Test

R Value of R 5.5

Emissivity Rating of .03



SOL-R-SKIN SHINGLE

SOL-R-SKIN Composite Shingle underlayment was designed for use under composite shingles. Consisting of a layer of polypropylene water resistance material bonded to a layer of high polished aluminum. SOL-R-SKIN has a emmissivity rating of .03 which reduces attic temperatures by up to 35F. SOL-R-SKIN will not harm shingles or affect warranties.

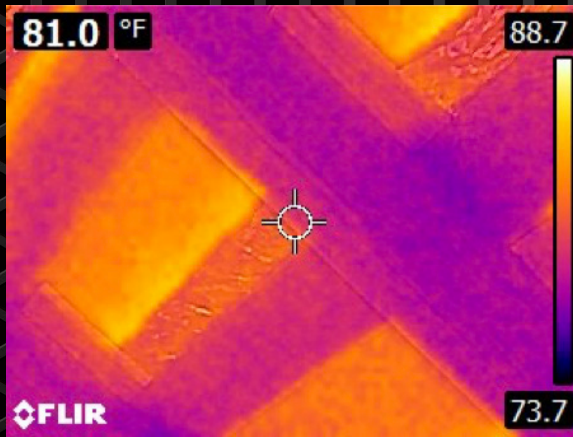


WHY SOL-R-SKIN

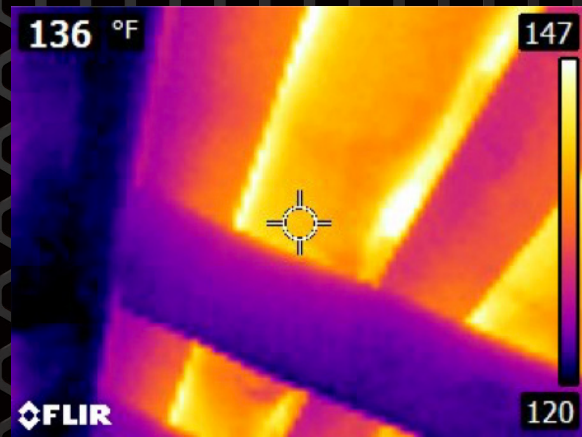
SOL-R-SKIN is the first underlayment that combines the qualities of a roofing underlayment with thermal and fire characteristics of thermal insulation. Our patent pending technology uses only the finest quality materials to not only protect your homes roof from the elements but also reduce your homes energy consumption and protect against potential fire risks.

SOL-R-SKIN consists of a layer of 99% scrimmed reinforced high polished aluminum bonded to a layer of fiberglass that is bonded to a layer of synthetic underlayment creating a product that is revolutionizing the roofing market and helping roofers meet new energy and fire codes.

SOL-R-SKIN can be used under a wide variety of roofing applications from composite shingles, stone coated steel, clay tiles, and metal roofing.



WITH SOL-R-SKIN



WITHOUT SOL-R-SKIN

TEST DATA

THERMAL PERFORMANCE

R 5.5 ASTM C1363/C1224

PHYSICAL PROPERTIES

Flame Spread	Class A	ASTM E 84-10a
Smoke Developed	Class 1	ASTM E 84-10a
Burning Brand	Class B	ASTM E -108
Meets ASTM D226		